

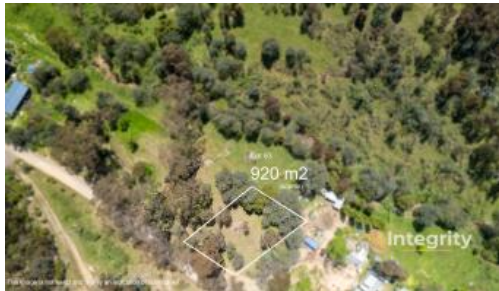
SOLD

Lot 61

898 m<sup>2</sup>  
(approx)

61 & 63 Long Gully Road, Flowerdale

This image is not exact and is only an indication of boundaries



## Escape to the Country

With only a handful of quality vacant blocks left in the region, this may be one of your last opportunities to build your dream home (STCA) in a beautiful regional location.

Features include:

- Private and quiet location
- Rural Living Zone
- Close to the King Parrot Creek
- NBN available\*

Resting in scenic foothills, only 1 hr 24 min to the city, this property offers a stress-free lifestyle while still having everything you need within an easy drive. If you're looking for schools, Flowerdale Primary is a quick 3 min drive and Whittlesea Secondary College 27 min. You can also walk along the track beside the King Parrot Creek to the general store within 9 minutes or jump in the car for a 2 minute drive to the Flowerdale Hotel for a great meal. Enjoy the great outdoors all around you

📏 898 m<sup>2</sup>

<b>Price</b>	SOLD for \$195,500
<b>Property Type</b>	Residential
<b>Property ID</b>	202
<b>Land Area</b>	898 m <sup>2</sup>

### Agent Details

William Verhagen - 0437 371 969

### Office Details

Integrity Real Estate - Yarra Glen

SHOP 2 38-40 Bell St Yarra Glen, VIC, 3775 Australia  
0407 531 226

with walking trails and driving/riding trails all within a short distance or get involved with the wonderful community by joining in to the local projects or workshops.

Available regional services include mains power, tank water storage, LPG bottled gas, onsite waste treatment systems & satellite NBN.

If you've been wanting to make the Regional move, now is the time. Contact us today for more information.

The above information provided has been furnished to us by the vendor/s. We have not verified whether or not that information is accurate and do not have any belief in one way or the other in its accuracy. We do not accept any responsibility to any person for its accuracy and do no more than pass it on. All interested parties should make and rely upon their own inquiries in order to determine whether or not this information is in fact accurate.