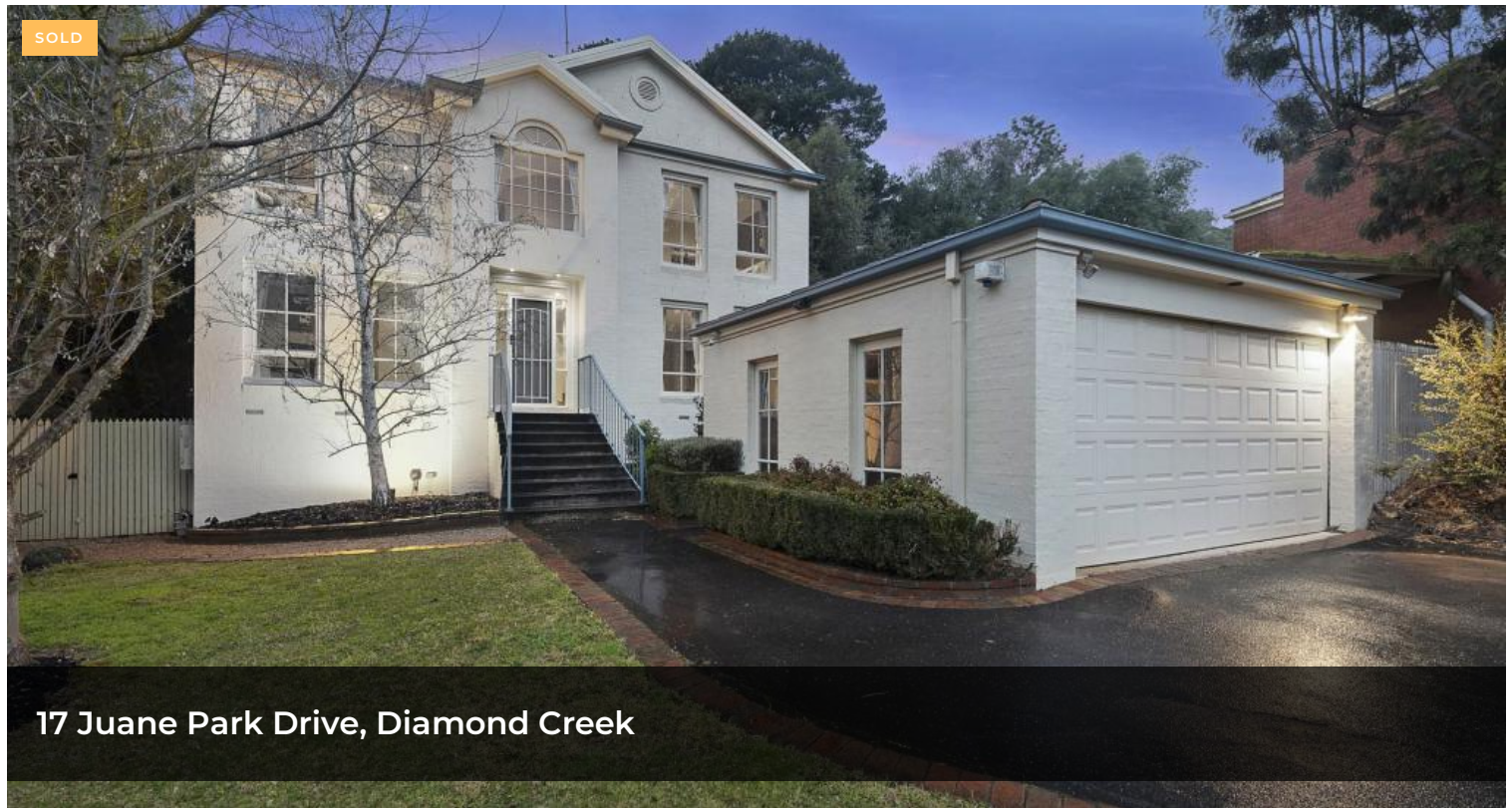


SOLD



17 Juane Park Drive, Diamond Creek



High End Family Living

Situated in the sort after Jacaranda Estate is this executive family home. Character and style are bursting at the seams thanks to its expansive proportions, quality fixtures and array of inclusions.

As you enter the substantial home you are greeted by a spacious entrance filled with natural light ushering you past the 5th bedroom or home office. First level provides a powder room next to the laundry, and formal living fitted with state of the art home theatre room perfect for friends and family. At the rear of the home it flows into the deluxe kitchen overlooking open plan family room and dining as well as the separate rumpus room. The living zones harmoniously spill outdoors to the enormous undercover entertainment patio area and generous yard space.

Moving upstairs, centred around a generously proportioned retreat or study space, is an enormous master suite incorporating a parents retreat, en suite and dressing room. Additionally there are 3 double bedrooms all with built in robes

5 2 2 819 m2

Price

SOLD for
\$1,299,000

Property Type

Residential

Property ID

2

Land Area

819 m2

Floor Area

371 m2

Agent Details

William Verhagen - 0437 371
969

Office Details

Integrity Real Estate - Yarra
Glen

SHOP 2 38-40 Bell St Yarra
Glen, VIC, 3775 Australia

as well as a spacious family bathroom, ensuring everyone has their own space. With a near 40 sq. under roof the intelligent design continues with under house storage space or cellar. You will never lack creature comforts with the abundance of heating and cooling solutions consisting of ducted heating and cooling and split system air-conditioning.

Outdoors consists of lawns and landscaped gardens sustained by garden water tank, featured built in timber seats hiding clever storage underneath and much more. A double lock up garage services car accommodation and the asphalt driveway has ample room for cars and trailers.

Perfectly positioned within the St Helena Secondary College school zone and close proximity to Greensborough plaza, this inviting home boasts innovative design delivering best in class family living. Providing versatility and harmony, inspections will be sure to impress.

The above information provided has been furnished to us by the vendor/s. We have not verified whether or not that information is accurate and do not have any belief in one way or the other in its accuracy. We do not accept any responsibility to any person for its accuracy and do no more than pass it on. All interested parties should make and rely upon their own inquiries in order to determine whether or not this information is in fact accurate.

0407 531 226

Integrity
Yarra Valley & Kinglake Ranges